



**High Performance Tapes,  
Adhesives & Ancillaries**

Product Guide



## Technical Tapes

Pg 4 & 5 - High Performance  
Pg 6 - Very High Bond

Pg 10 & 11 - Glazing & Mounting Foams  
Pg 12 - Aluminium Foil Tapes / Cloth Tapes



## Adhesives, Accelerators & Cleaners

Pg 7 - Advanced Bonding Range



## Masking Tapes

Pg 8 - Masking Tape Range



## Protection Films

Pg 9 - Protection Films & Tapes



## Xpanda Foam Tape

Pg 14 - BPA Approved Expanding Foam Tape



## Structural Spacer Tape

Pg 15 - Structural Spacer Tape



## EDPM Solutions

Pg 16 & 17 - EDPM & Adhesives



## Qu-Fire Facade UV & Fire Solutions

Pg 18 - Facade Membranes & Construction Products



## Siga Airtight Tapes, Membranes & Primers

Pg 19 - Siga Range

# Welcome to the Qualitape product guide!

## Presenting a selection of high-performance bonding products, designed for a range of specialist applications and industries.

For over 20 years, Qualitape UK Ltd have been supplying a diverse range of technical tapes to various industries and individuals across the globe. Working alongside world class adhesive manufacturers and coaters, we are able to offer high quality products, tried and tested to meet the needs of our changing environments. Our warehouse is equipped with top tier machinery enabling us to provide precise cut measurements and quantities for your application, this combined with our log stock availability ensures a speedy delivery.

Not just a supplier, we also offer technical advice and support for those tricky or more specialized jobs. From site visits to product testing, we are committed to helping you achieve your requirements and our friendly team can assist with comparing options, meeting product specification and trialing samples.

We currently supply and support the following industries:

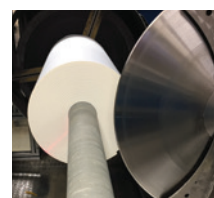
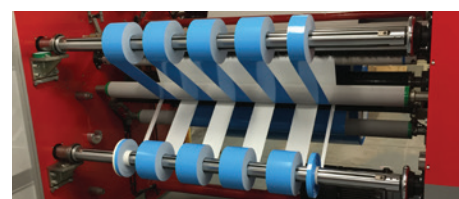
**Window Manufacturing & Installation / Glazing / Construction / Fenestration & Structural Glazing / Shop Fitting / Carpentry / Furniture Manufacturing / Finishing / Auto Repairs / Aerospace / Sign & Graphics / Electronics / Film Industry**

Should you need guidance on any application or are unsure which is the most suitable product to meet your needs, please call our technical team who will be pleased to assist.

## Additional Services:

### Rewind and Slitting, Lathe Slitting & Die Cuts

Our investment in machinery for converting mill reels and logs means we are able to cut our tapes in bespoke widths to meet the exact requirements of our customers. We are also able to supply die cut shapes in standard profiles through to intricate patterns in polyethylene foams to act as masks, gaskets or bonding tabs.





## High Performance Acrylic Double Sided Tapes

### QT910

Double sided  
polyester

**Our 910 range** will create an impressive secure bond between most substrates. With a choice of three liners and two carriers, this trio will cater for difficult to bond low energy surfaces and prevent plasticiser migration causing failures. They are widely used in a range of manufacturing industries for optimum reliable adhesion lasting many years.

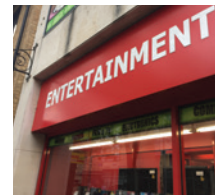


General Purpose  
QT910E

Heavy Duty  
QT910P

Optical  
QT910F

Trim Fixings, Mouldings,  
Automotive, Marine, Aerospace,  
Shopfitting & Sign Manufacturing



### QT910 H/T

High Temperature  
Double Sided  
Polyester

A transparent, very high tack, solvent acrylic adhesive. Bonds aggressively to plastics, flexible PVC, glass, metal, aluminium, ceramics, styrene boards, painted surfaces and hard to bond, low surface energy substrates. With a high temperature resistance of 205°C the QT910 H/T is perfect for bonding metal to metal prior to heating within a powder coating oven.

Recent trials focused on our tape adhered to a metal panel, withstanding 195 °C on a 20 minute cycle. Securing the metal panel in a vice and applying 19kg of downward pressure on the joint showed successful bonding results.

A follow up test with a 10kg weight hung from the panel over a 48hr period also concluded with the tape remaining intact.

**Prior to application the surface should be made dry and free of any dirt, dust and grease. Use sufficient pressure over the whole surface at room temperature to ensure maximum adhesive contact.**



# High Performance

## Continued

Banner Hemming, Trim Fixing,  
Powder Coating, Acrylic Displays,  
Paper Splicing



**QT124**

Tissue Solvent  
Acrylic

An easy tear double sided acrylic tape for economical fast application. With the added benefits of UV resistance and wide-ranging temperature tolerance, this tape is ideal for temporary point of sale displays, laminating printed boards and assisted banner hemming.



**QT451**

PVC High Tack

Multi-purpose, PVC, high performance double-sided tape. Used in the Signage, Furniture and Flooring industries. Very high tack modified acrylic adhesive which withstands plasticizer migration. Extensively used in banner production to seal hems



**QT552**

PET High Tack

A double sided PET high tack acrylic adhesive which can be used for the attachment of signs, covers, scales, metal and plastic films where high shear strength, adhesion and extreme temperature resistance are required. Can also be used as a fixing aid in sail production and for attachment of bars and trims.



**QT935**

Siliconised Polyester  
Masking Tape

With a temperature resistance of up to 220°C, this single sided masking tape is ideal for Powder Coating, Anodizing and PCB Fabrication.



**QT269**

General Purpose  
PVC Tape

Highly flexible. Suitable for various applications, such as economic floor marking, repairing, jointing PE foils, barrier tape to prevent electrolytic reaction between dissimilar metals and for sealing boxes and drums.

# Very High Bond Acrylic Adhesive Tape

Structural Adhesives,  
Accelerators, Sealers and  
Promoters

**There are many advantages** to using a structural bonding tape when compared to other fixing methods. It can in many applications be confidently used to replace traditional adhesives, spot welds, rivets, screws, nuts and bolts.

It bonds immediately, allowing for production to continue, boosting productivity. Unaffected by ageing and UV (no discoloration) and is suitable for Internal/External all weather use. It acts well as a gap-fill and seal, absorbing shocks and vibrations.

These extremely powerful tapes can be found in many applications for critical bonding in the Marine, Aerospace and Defence industries. Other common uses include Highway Signage manufacturing, fixing of brackets, fabrication of acrylic displays, mounting of glass, component assembly, sheet metal cladding and vehicle panel mount.



## QT562

A pure, high transparency, high mass acrylic adhesive on a roll

Along with its exceptional bonding capabilities, this tape has outstanding load bearing characteristics and is used in many industries for creating dynamic structural bonds to Steel, Aluminium, Plastics, Composites, Ceramics and Glass. It has been developed for intensive use in extreme environments to with stand temperatures ranging from - 40 °C to +200°C over many years. It is good for use on textured and powder coated surfaces, also good on most low energy substrates



High performance foamed acrylic adhesive excellent for bonding low and medium surface energy materials e.g. Powder Coated Metal, Plastics, Painted Surfaces etc. Suitable for long term bonding applications indoor and outdoor. Unaffected by UV.

High Temperature resistance. Available in Black 1.1mm thickness – Widths cut to size

## QT600-B

Low Surface Energy

## QT600

Very High Bond

Foamed acrylic adhesive tapes in standard colours, Grey, Black and White. This range allows for aesthetic matching of the substrate with the adhesive. Ideal for covering over unsightly blemishes or blocking out screw holes and joins, making for an enhanced visual experience. The grey is often associated with engineering when bonding metals and the white is often used in combination with white extruded plastic.



Available in the following thicknesses:

	0.50mm	1.0mm	1.50mm	2.0mm	3.0mm
Clear	•	•	•	•	•
White		•		•	
Grey		•	•	•	
Black		•		•	



## Advanced Bonding



### QT923

Non-solvent general purpose cleaner / degreaser

A recommended pre-bonding surface cleaning agent for use in removing contaminants, such as oil, grease, wax, silicone-based polishes and grime, enabling adhesive tapes to work at optimum performance for longer.



### SX100

Adhesion promoter

This promoter helps acrylic adhesive tapes bond better to substrates that normally resist adhesion as well as immediately accelerating the curing process by up to 90%. Once applied, it rapidly flashes off, creating a seal between the substrate and the tape. Effective against plasticizer migration, SX100 also quickly seals porous surfaces due to its fast evaporation rate.

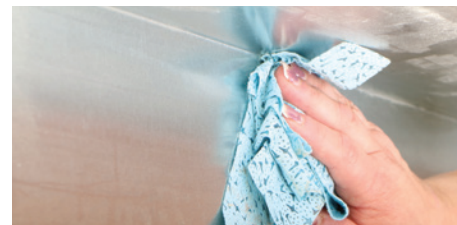


### QT928

Wet-Out Roller

To ensure your tape is working at optimum performance, the adhesive must be in 100% contact with the surface it is applied to. Although hand firming the tape down will go some way to improve the bond, nothing compares to pressure applied through a flat wet out roller for the ultimate bond.

## MultiPrep / Maximising the Bond



## Adhesive Product Range



We also supply a vast range of specialist adhesive products suitable for various industries. Contact Adhesive, Methacrylates, Cyanoacrylates, PUR, PVA, Fast-Setting Acrylic's and High Temperatures Acrylic.

- ✓ Shop Fitting
- ✓ Construction
- ✓ Glazing
- ✓ Sign Manufacturing
- ✓ Carpet & Flooring
- ✓ Foam & Upholstery

# Masking Tapes



**QT909**  
180 Day Exterior & Interior Tape

Will remove cleanly leaving no residue after exposure to fluctuating temperatures and UV light giving crisp paint lines. Withstands temperatures to 60°C.



**QT911**  
High Tack

With a natural rubber adhesive. Good on porous surfaces such as wood and plasterboard. Also good on many other surfaces. Temperature range to 60°C.



**QT912**  
High Temp

A good all-round quality masking tape that work well in short term 100 °C paint ovens. Versatile and popular with a clean removal, this tape can be used in a range of high demand applications.



**QT914**  
30 Day Exterior Tape

Removes cleanly leaving no residue after exposure to fluctuating temperatures and UV light. Withstands wide ranging temperatures.



**QT906**  
Dolphin Orange Exterior Rough Surface

A strong and waterproof builder's tape with a clean, easy removal. Suitable for rough surfaces, plaster and brick.



**QT905**  
Dolphin Blue Exterior Waterproof Masking

UV resistant and perfect for smooth surfaces such as Vinyl, Glass, Plastic, and Aluminium. Gives a clean and easy removal. Often used on painted walls and trims, lacquered / varnished woodwork.





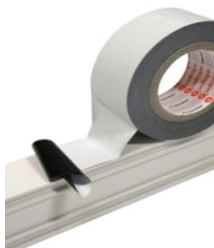
# Protection Films



Standard roll lengths 600mm x 100m

## PF368

### Black & White Surface Protection Tape



An LDPE three-layer co-extruded tape, with UV stability. Suitable for protection of sensitive surfaces against mechanical damage, dust, and dirt during transport, storage and assembly.

Both Interior and Exterior use, perfect for the following surfaces with low gloss:

- Stainless Steel (ground)
- Aluminium (ground, matt anodised)
- PVC, PVDF, Polyester, Acrylic lacquers and Plastics
- Ceramics & Marble

Available as Low, Medium & High Tack to suit varying applications.



## PF34

### Carpet Protection

Tear resistant and easy to use. This high grade film does not shift and can be easily repositioned and quickly removed. Ideal for carpet and floor protection, protecting against mud, spillages, silicones and paint. Used mainly in the construction and renovation industries for demanding applications.



## PF37

### Window & Surface

During construction, decorating, refurbishment on glass, plastic, steel, ceramics and wood our surface protection film will keep off dirt and debris until the final unveiling for a perfect presentation. A durable low tack film that removes cleanly leaving no residue. Used extensively by professional tradesmen.



## PF40

### Hard Floor Protection

A medium tack level acrylic adhesive for the protection of hard floor surfaces against dust, dirt and paint. PF40 is easy to use and removes easily leaving no residue, making it ideal for protecting all hard floor surfaces. Available in Red and blue.



## PF38C

### Clear Polyethylene Protection Film for Sensitive Surfaces

Recommended for the protection of sensitive surfaces against dirt and damage during processing, storage and mounting. Includes painted metal (PVDF and Polyester) and Plastic sheets (PVC, PC and Melamine).

# Glazing & Mounting Foams

Our range of PE Foam tapes are used for creating strong bonds between Plastics, Styrene Signage Boards, Acrylic Sheet, Aluminium, Ceramics, Powder Coated Surfaces, Glass and also on low surface energy substrates such as plasticized PVC. Designed to withstand working temperatures ranging from -30°C to + 90°C, these tapes are unaffected by UV and ageing. They have the ability to compress, making them ideal for use on rough and textured surfaces. Available in white paper liner or blue polythene liner for Installation stripping.



**QT890**

Double Sided Polyethylene  
Foam Tape

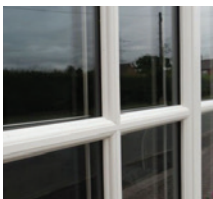
**Suitable for:**  
Bonding to a wide range of surfaces including  
Glass, UPVC, Aluminium and Treated Timber.

High Density – 85kg  
Load Bearing Solvent Acrylic

Medium Density – 67kg  
High Tack Standard Modified Acrylic

Low Density – 48kg  
Highly conformable Solvent Acrylic

**Supplied as White or Black Foam**  
**Various widths and thickness's available**



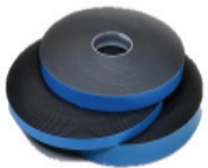
**QT892**

Double Sided PVC Security  
Glazing Foam Tape

**Suitable for:**  
Demanding sealing applications requiring long  
ageing. Ideal for rough and textured surfaces, and for  
Wooden Casement & Sash Window Dry Glazing.

High Density  
Modified Acrylic Adhesive

**Supplied as White or Black Foam**  
**Various widths and thickness's available**



**QT894**

Double Sided High Tack  
Polyethylene Foam Tape

**Suitable for:**  
Bonding to a wide range of smooth surfaces, including  
Glass, UPVC, Aluminium and Treated Timber. Perfect for  
jointing, sealing and mounting.

Medium Density  
Modified Acrylic Adhesive

**Supplied as White or Black Foam**  
**Various widths and thickness's available**



# Glazing & Mounting Foams

## Continued



### QT897

Double Sided PE  
Mounting Foam

Closed cell with modified solvent acrylic adhesive and high-density green mono-siliconized PE Liner. Interior & Exterior.

#### Suitable for:

Mounting strips & accessories in the auto trade, powder coated metals, plastics, fiberglass and rubber profiles.



### QT202

Single Sided PVC Air  
& Dust Seal Foam

Medium Density with Acrylic Adhesive. Watertight at 30% compression.

#### Suitable for:

Use as a water, air and dust seal in applications such as light units, vehicle roofing and external cladding.



### QT402

Single Sided &  
Double Sided PE  
Foam Spacer Tape

Closed-cell, very high conformability. Excellent Insulation, Barrier to Thermal Bridging, Galvanic Corrosion & Acoustic Transmission.

#### Suitable for:

Use as a spacer tape between dissimilar metals, or where absorption of vibration / shock or expansion traction are required.



### QT159

Single Sided Closed  
Cell Neoprene Foam  
Tape

Closed Cell, with High Tack Acrylic Adhesive. Designed to be an air, dust and water seal at 30% compression.

#### Suitable for:

A wide range of applications that require a positive water seal and chemical resistance. Also used in open and closed seals.



## Aluminium Foil Tapes

Ventilation, Ducting, Insulation Boards,  
Roofing, Cladding & Guttering

### QT220

“Chemically resistant aluminium foil tapes for shielding against heat transfer, UV light, weather & ageing...”

Our QT220 range of foil tapes are extensively used throughout the heating, ventilating, window manufacturing and insulation industries for their longevity and performance in extreme temperatures and weather conditions.

The UV stable adhesive makes them ideal for use in many external applications such as on roofing, guttering and lagging along with many other semi-permanent patch repairs. The range is ideal for sealing insulation panels and duct flanges against water ingress and is fire rated to class ‘O’. Available in thicknesses from 30mu up to semi rigid 100mu shielding. We can provide you with accurately cut standard roll widths or custom cut rolls to fit your exact profiles and requirements.

Temperature range from -30° to +180° deg C.



## Cloth Tapes Gaffer



### QT340

Standard General Purpose

A medium duty, easy tear cloth tape with a medium tack adhesive, ideal for a multitude of uses. Popular for temporary repairs, joining materials, wires and sealing cartons.



### QT341

High Tack

For demanding applications where high adhesion is required. This tape has been developed with an aggressive high tack rubber adhesive for a secure bond.



## Qualitape Brands

### Products & Services

### "The Trusted Brand for Quality & Reliability"

Our dedicated brands have evolved from listening to what our customers want and expect from the products they buy. Along with this, our conversion facilities enable us to cut our products to the widths you need and the exact quantities required. This combined with a next day delivery service has earned us an unrivalled reputation which we are proud of.

Design, technical support and consultation are the three key areas in which we specialise, offering solutions in a variety of applications.

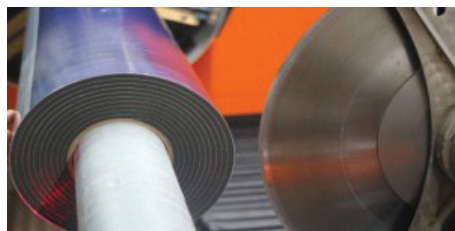


## Design, Installation, Service and Support

### On site support



### Design & Installation



### Company Fit Test Service "Train the Trainer"





BBA Approved  
Expanding Foam Tape

“Expanding Foam Tape for Gap Sealing”

Xpanda 600 is a pre-compressed open cell polyurethane foam back roll with a self adhesive scrim tape to assist positioning. Heavily impregnated with chemically stabilised acrylics creating flame retardant properties. Xpanda 600 remains permanently elastic and will continually self adjust after installation to keep gaps closed for many years.

After application, Xpanda foam tape expands to fill gaps and also adapts to uneven surfaces to provide long term thermal and acoustic insulation.



Characteristics

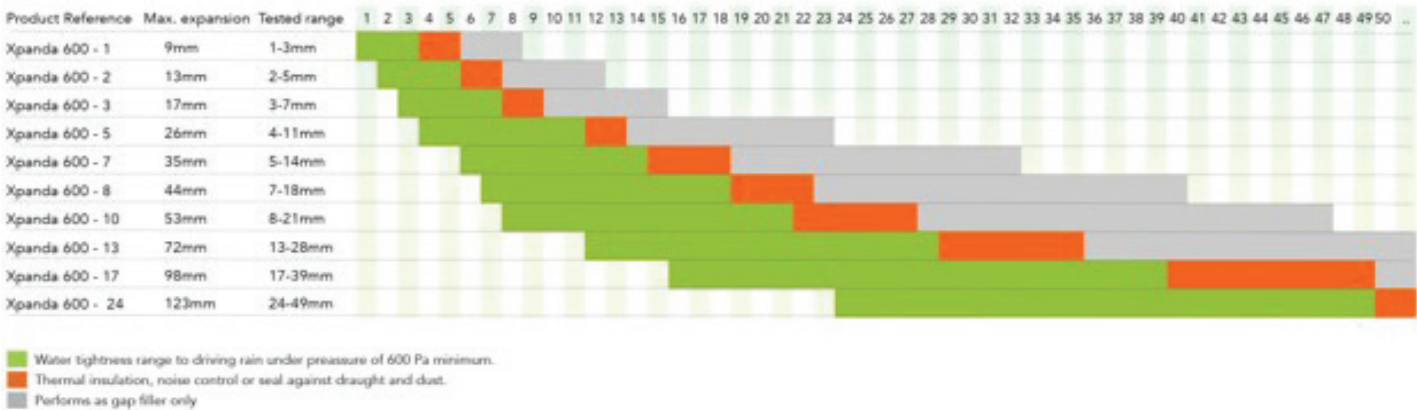
From fully decompressed down to 75% compressed.



Expansion Range

- 10% Compressed - Draught / Acoustic Shield
- 50% Compressed – Thermal Insulation & Dust Seal
- 75% Compressed – Acoustic, Weather Seal to 600pa, will resist water spray up to 600pa differential to EN86
- Compressed Foam

Xpanda water tightness performances to driving rain under pressure



Features

Quick Application, No Mess, No Fuss - Over paintable – Breathable – Seals against uneven surfaces – Minimal Wastage – Protects against the effects of Weather – Accommodates Joint Movement

Applications

Weather Seal for Windows & Doors, Expansion Joints, Side/End Laps on Roofing Sheets, Joints for Portable or Sectional Buildings, Abutment Seals for Conservatories, Acoustic Seals, Timber Building, Ductwork, Sealing Roof Lights, Caravan & Mobile Home Manufacture, Garage Door Seal

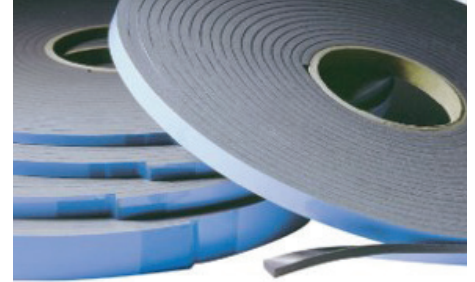


# Structural Spacer Tape

**QU-PRO-300** is a high tack acrylic adhesive coated PVC **structural spacer glazing tape**. Designed for use in structural spacer systems, it has an open cell structure to allow the curing of structural silicones on all sides. It has a fast recovery from compression.

A specialized adhesive tape used in the construction of fenestration systems, particularly in commercial applications such as skylights, storefronts, and curtain walls.

**Available as Single & Double Sided tape and in various widths and thickness's.**



The use of structural glazing tape offers several advantages:

**Clean sight lines:**

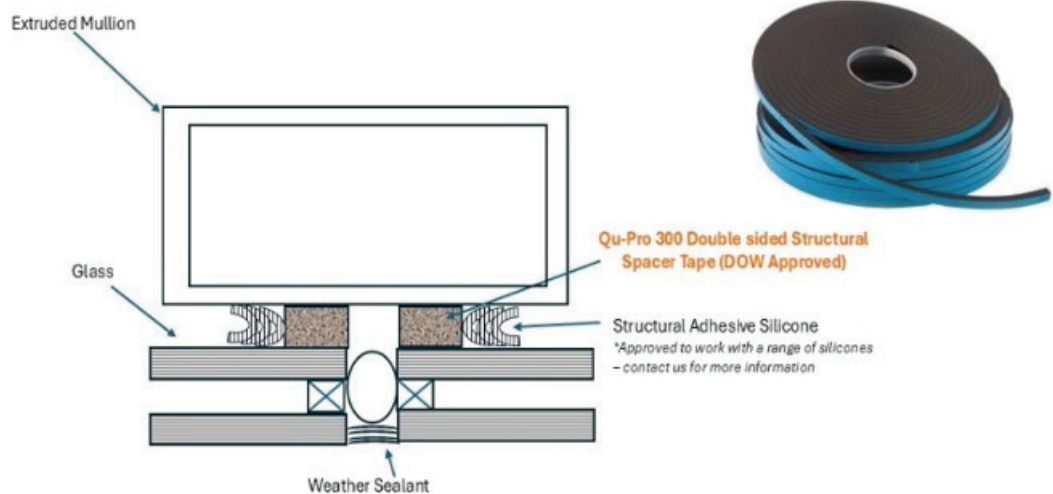
Since it eliminates the need for excessive caulking, it provides aesthetically pleasing sight lines.

**Rapid cure lines:**

Tapes allow for immediate handling after installation, which can significantly reduce project timelines.

**Ease of Fabrication:**

The application process is straightforward compared to traditional methods involving extensive curing times for sealants.



Structural Glazing Application using Qu Pro 300 Spacer Tape

## EPDM & Adhesives

---



### Novoproof FA EPDM

---

Available in 0.6mm &  
1.3mm thick

An elastomeric membrane (a mix of EPDM with oils and fillers), with very good resistance to weather conditions, UV and ageing. Long term waterproofing, elastic and rot resistant. Recyclable and solvent free.



### Novoproof Kleber FA

---

EPDM Glue Sausage  
600ml

A one component sealing adhesive with a base of synthetic rubber. Cures to a durable, elastic rubber. Especially developed for bonding and sealing Novoproof FA EPDM facades to building materials, such as aluminium, concrete, plaster, steel, wood and overlaps between EPDM sheets.



### Novoproof Kleber TA

---

Adhesive 4.7kg

A 1-component special adhesive and sealant based on synthetic rubber. For bonding EPDM membranes on various surfaces including wood, aluminium and concrete, PVC windows, steel and wood. Also for connections between membranes and overlaps between EPDM foils.



### Novoproof EPDM Cleaner 5L

---

To clean the EPDM FA (if not clean enough) before bonding with the adhesive sealant FA or the contact adhesive Kleber TA.

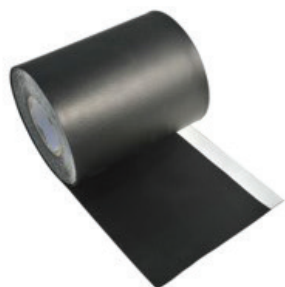


### Novoproof Primer 4.5kg

Adhesion promoter for use with self- adhesive films, contact adhesive Kleber TA or the adhesive sealant Kleba FA. Used for porous, damp substrates and for temperatures between -10°C and +3°C.

## EPDM & Adhesives

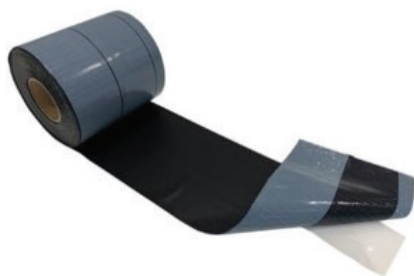
### Continued



#### Novoproof FA EPDM with Butyl Strip

0.6mm Membrane - Add one or two Butyl Strips.

Elastomer film (a mix of EPDM with oils and fillers), with very good resistance to weather conditions, UV radiation and ageing. Long term waterproofing, elastic and rot resistant. Recyclable and solvent free.



#### Self Adhesive EPDM

Available in 0.75mm

EPDM Elastomeric membrane – provided with an acrylic adhesive layer over the entire surface. Very good resistance to weather conditions, UV and ageing. Very good long-term watertightness. Highly elastic and putrefaction resistant. Recyclable and solvent free.

## QuFix - Façade Solutions

### EPDM System Ethylene Propylene Diene Monomer



#### QuFix

EPDM  
Standard  
Membrane

Seals internally between window frames and a variety of substrates using high quality EPDM utilising solvent free adhesives. Available in 0.75mm thickness.

#### QuFix

EPDM  
Butyl Strip  
Membrane

QuFix Standard Membrane with the addition of one butyl strip for easy and clean application to timber and composite frames.



*Order your complete EPDM System  
– call our friendly team for more  
information*



## Construction Products



### Qu-Air Black FR

S1, d0 – Façade  
Membrane

From our **QuFire** range, an ecological PES fleece with an innovative, vapour permeable polyurethane coating that provides durable UV protection and increased fire resistance.



### Qu-Air Pro (High Tack)

Airtight / Waterproof  
Exterior Foil

Self adhesive, consists of a vapour permeable, coated fleece. The felt surface of this membrane ensures driving rain and moisture run safely and reliably from the façade. Rain and powder snow proof. 1200 pascal / 3 months UV durability. Supplied with a split liner for ease of installation – split liner can be positioned to your specification.



### Qu-Air / LDPE Connections

Airtight Connection  
Tape

LDPE tape with a very strong acrylic (Solvent Free) adhesive layer on one side. Excellent age resistance and very good resistance to humidity. Applicable from +5°C (dry surfaces).



### Qu-Air / UV Protection

UV Protection Tape

Tape with UV-treated film coating with a very strong acrylic (Solvent Free) adhesive layer on one side. Very good ageing and moisture resistance. Applicable from -10°C (dry surface).



### Stixall Hybrid Sealant 290ml

Based on hybrid polymer technology, Stixall has the most Extreme power to both bond and seal virtually EVERYTHING to ANYTHING in virtually all conditions, even under water or in the rain.



### OZ Pure Citrus Cleaner 500ml

For use as a general degreaser. Effectively removes tape residue and adhesive overspray. Cleans guns and tips, removes grease and tar.



## Air-Tight Tapes

Qualitape UK Ltd are a UK distributor of SIGA Air-Tight Tapes, Membranes and Primers. Our friendly staff are SIGA trained and able to provide technical support and assistance to aid you in creating your air tight environment.

### Air-Tight Tapes - Interior

#### Window Interior

##### Fentrim 20

A pre folded 50/85 mm wide, single sided high performance adhesive tape with a perforated plastering zone for perfect joining to timber wall elements and vapour control layers.



#### Interior Membrane

##### Sicrall 60

A single Sided High Performance adhesive tape for overlaps of vapour control layers and joints of wood-based panels.



#### For Walls & Services

##### Rissan 60

Special, reinforced elastic PE film. Clings tightly around pipes and cables. Keeps joints sealed despite structural movements. Extremely strong adhesion.



With the introduction of Part L 4.17 H to the building regulations, all New Build installations of windows and doors must now include an internal airtight tape and compressible seal. A perfect partner combination of Siga Fentrim and our Xpanda foam tape will meet the new criteria.



### Air-Tight Tapes - Exterior

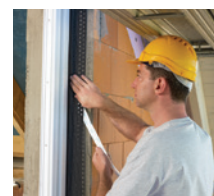


Opposite we display a few of the most popular and biggest selling products in this range that out perform all other airtightness tapes currently on the market.

Our products comply with all European Building Regulations



#### Tapes & Membranes for Windows, Roofs & Walls,



#### Priming & Bonding











Qualitape (UK) Ltd,  
1 Sarah Court, Piperell  
Way, Haverhill, CB9 8PA

01440 710747  
[info@qualitape.co.uk](mailto:info@qualitape.co.uk)